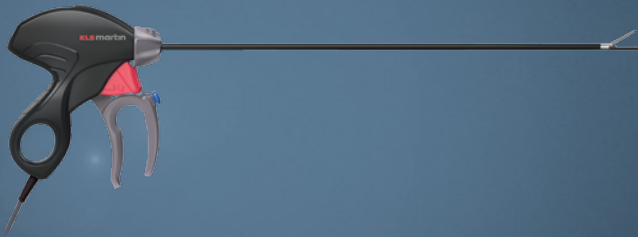




marSeal5 plus

A new dimension in
intelligent vessel sealing



"The new sealing instrument marSeal5 plus is very comfortable to hold. It fulfills all of the ergonomic requirements for a modern sealing instrument.

The fact that the instrument can be reused pays for itself. We value safety, reliability, and cost-effectiveness."



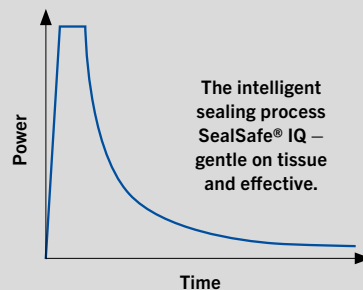
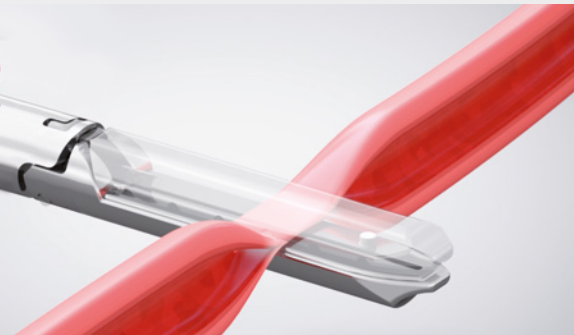
Prof. Gerald Gitsch
University Women's Hospital
Freiburg
Medical Director



marSeal5 plus

A new dimension in
intelligent vessel sealing

Up to 25% faster sealing!



Vessel sealing up to \varnothing 7 mm
Lateral thermal expansion < 2 mm
Burst pressure at least 360 mmHg

The combination of the correct current type, SealSafe® IQ, and pressure on the tissue produces a permanent sealing zone. The tissue is cut exactly in the middle.

The impedance-controlled sealing process is continuously monitored. The system only delivers as much power as is required for sealing.

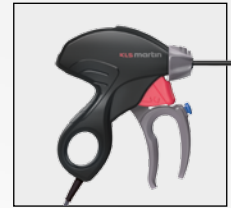
The marSeal5 plus rings in the new generation of bipolar sealing instruments from KLS Martin. It has been systematically refined and tailored to meet the needs of users in terms of ergonomics and the ease with which it can be taken apart and cleaned.

The corresponding current – SealSafe® IQ – is supplied by the high-frequency generator maxium®. Together, they form a bipolar sealing system that converts endogenous structural proteins like collagen and elastin in such a way that veins, arteries and tissue bundles are permanently and reliably sealed. By optimizing the sealing process, sealing time is up to 25% faster.

The marSeal5 plus system features an integrated blade that is used to cut through the tissue in the center of the sealing area immediately after sealing. All this without changing the instrument. And in a single step. This saves valuable surgery time and therefore money.

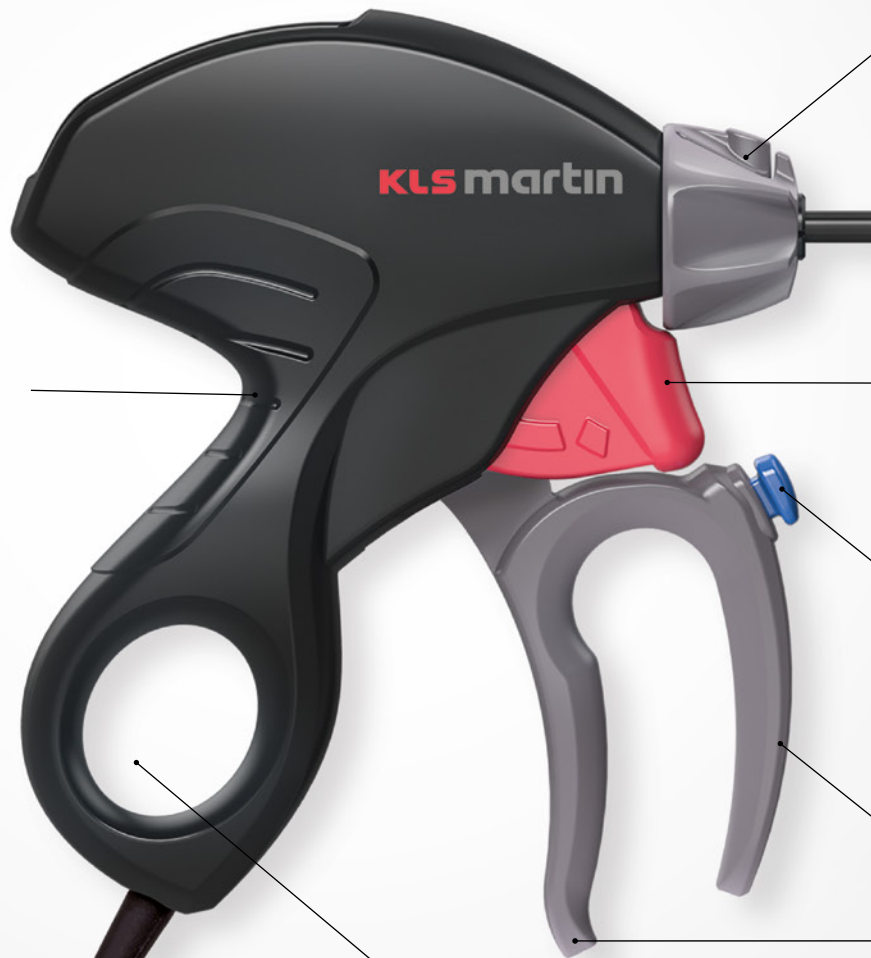
- ✓ **Ergonomic**
- ✓ **Safe**
- ✓ **Fast**
- ✓ **Efficient**

marSeal5 plus Ergonomic handle design



**Slim and ergonomic
handle design**

**Ergonomic
handle for
fatigue-free
working**





Rotary control
(rotatable by 360°)

Ø 5 mm

Blade activation
for tissue cutting

Activation of
the sealing current

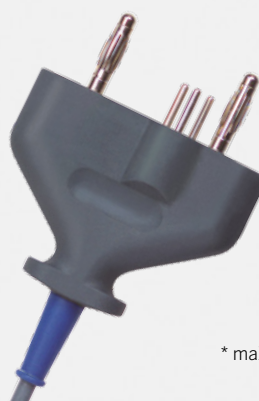


Activation of the sealing current and the
tissue separation by means of the index finger –
without any additional movement!

Ergonomic grip recesses

Thumb ring for
overhead working

IQ connector (Plug & Play) for
automatic instrument identification
at the maXium® generator*.



* maXium® software version 3.423 is needed.

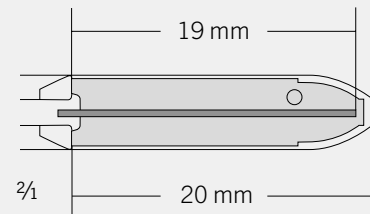
marSeal5 plus Jaw geometry



Special jaw geometry

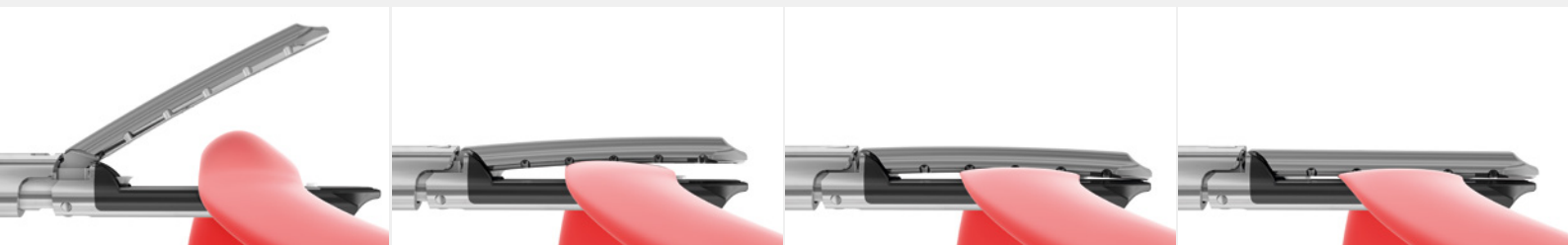
for preparation and sealing

- Sealing length: 20 mm
- Cutting length: 19 mm



Most of the natural gripping barrel systems have a curved shape.

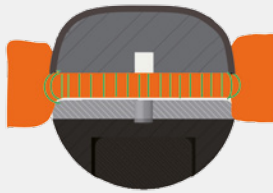
KLS Martin has transferred this form to the marSeal5 plus. This prevents the tissue which has already been gripped from falling out of the jaws.



The jaws are guided to the targeted tissue.

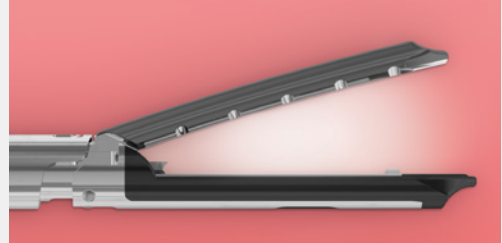
The jaws close in the front area first.
This prevents tissue slippage.

The tissue is compressed by snapping into place. The sealing current can be applied.



Through the special coating

on the outside of the jaw part, lateral thermal damage to surrounding tissue is reduced to a minimum.



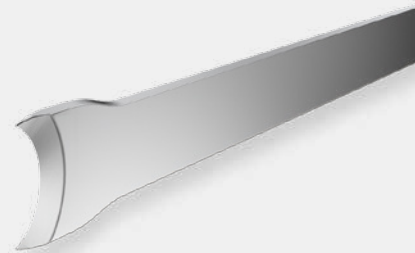
Bipoling

The instrument can be used with open jaws for surface coagulation. Only the tissue between the jaws is coagulated.

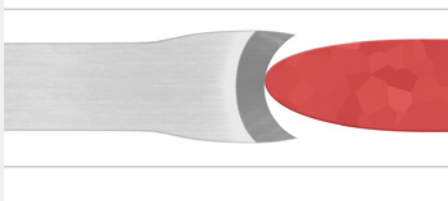
marSeal5 plus Blade geometry

The concave blade geometry

ensures that the tissue is automatically guided to the center of the blade. It prevents the tissue from “slipping” on the upper or lower side, so the tissue is not severed.



marSeal5 plus



Tissue separation with marSeal5 plus



In comparison: sealing instrument with chamfered blade geometry.

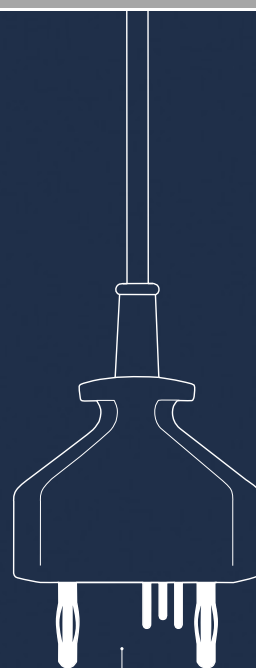
Result: The tissue is not severed.

marSeal5 plus and maXium® – a strong team

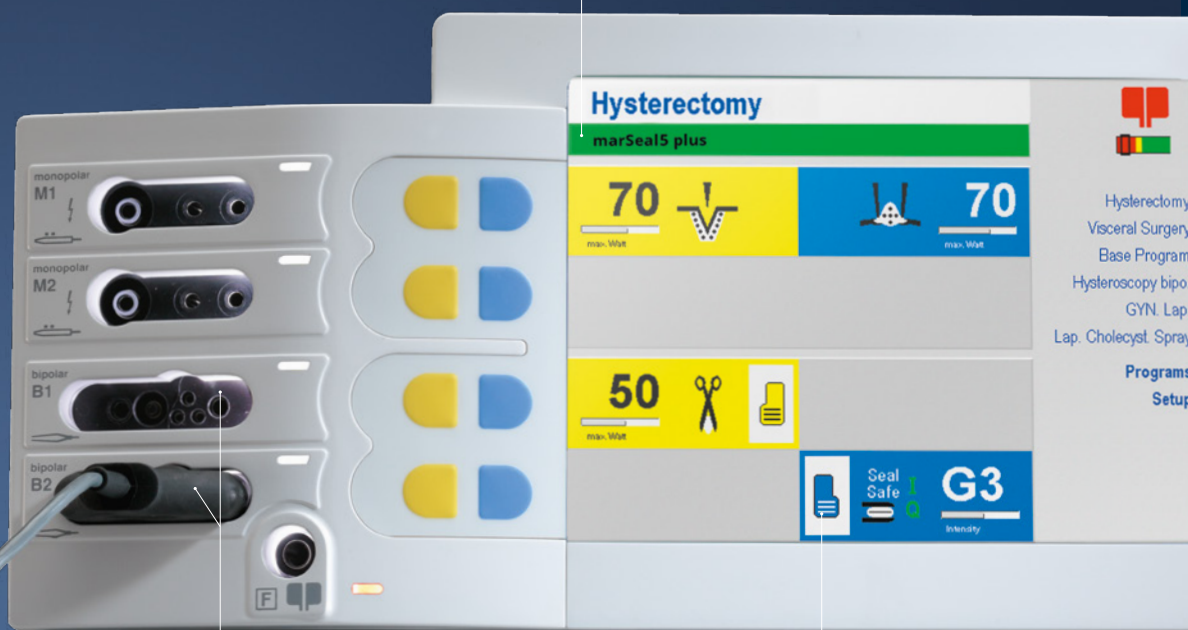
The HF generator maXium® supplies the corresponding sealSafe® IQ sealing current. The advantage for you is that when you plug in the IQ sealing instrument, the maXium® unit automatically displays the name of the connected instrument and selects the corresponding current with the relevant default values.

If you do not wish to work with the instrument-specific default values, simply change them as required and save the new values in the usual, program-specific manner. The advantage of this method is that when the IQ instrument is plugged in again, your customized values will appear instead of the default values. This underlines the "Plug & Play" philosophy of KLS Martin.

The marSeal5 plus needs the maXium® software version 3.423.



IQ connector for
connection to the
maXium® generator

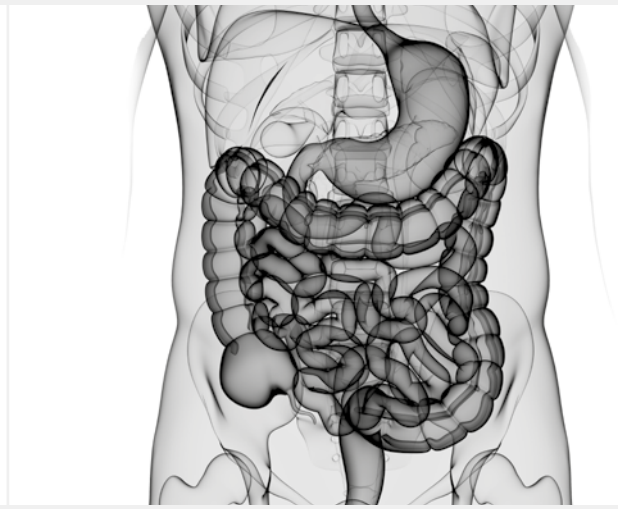


Display of the name
of the connected instrument

Use of the two bipolar
connection sockets

Automatic assignment of the
required current mode and
set up of the required power
output parameters

marSeal⁵ plus –
a really versatile instrument



Applications in gynaecology:

- Laparoscopic supracervical hysterectomy (LASH)
- Laparoscopically assisted vaginal hysterectomy (LAVH)
- Total laparoscopic hysterectomy (TLH)
- Vaginal hysterectomy
- Abdominal hysterectomy
- Ovarectomy and salpingectomy
- Adhesiolysis
- Cystectomy

Applications in general and visceral surgery:

- Colectomy
- Nissen fundoplication
- Gastrectomy
- Sleeve gastrectomy
- Esophageal resection with stomach transposition
- Splenectomy
- Adrenalectomy
- Nephrectomy

marSeal5 plus

Good for the environment and your budget

The disposable proportion of the instrument has been reduced to an absolute minimum. This means that this product is good for both the environment and for your budget.

The instrument features a disposable blade. The remaining components can be easily and quickly cleaned and sterilized using standard processes.

The components of the marSeal5 plus can be dismantled and installed very simply for cleaning:

Reusable components



Handle with IQ plug



Outer tube

Easy-to-disassemble inner and outer tubes

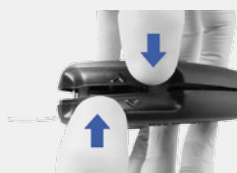


Inner tube with jaw part

Handle is easy to disassemble, due to the innovative magnet system



Open



Close

Consumables



Blade holder sterile or non-sterile

Accessory components for cleaning



Cleaning tool



Rinsing adapter set

marSeal5 plus

Cleaning and sterilization tray with lid



The corresponding marSeal5 plus Tray (L x W x H = 532 x 251 x 44 cm) can also be used for cleaning and sterilization. This tray can be ordered optionally under Item Number 55-803-71-04.

marSeal5 plus

Item numbers at a glance

Article number	Designation
Complete instrument	
80-633-00-04	marSeal5 plus, complete, consisting of handle, tubular shaft Ø 5 mm, shaft length 370 mm, including cleaning tools and flushing adapter, without blade holder *
Individual components	
80-633-04-04	Handle marSeal5 plus
80-633-05-04	Tubular shaft marSeal5 plus, Ø 5 mm, shaft length 370 mm, consisting of outer and inner tubes, including cleaning tools, without blade holder *
Consumables	
80-633-09-04	Blade holder for marSeal5 plus, 370 mm, sterile, sales unit = 10 pieces
80-633-11-04	Blade holder for marSeal5 plus, 370 mm, non-sterile, sales unit = 10 pieces
Cleaning and reprocessing tools	
80-633-12-04	Cleaning tools for marSeal5 plus
80-633-13-04	Rinsing adapter for marSeal5 plus
55-803-71-04	Cleaning and sterilization tray for marSeal5 plus

* Blades have to be ordered separately.

KLS Martin Group

KLS Martin Australia Pty Ltd.

Sydney · Australia
Tel.: +61 2 9439 5316
australia@klsmartin.com

KLS Martin India Pvt Ltd.

Chennai · India
Tel. +91 44 66 442 300
india@klsmartin.com

Martin Nederland/Marned B.V.

Huizen · The Netherlands
Tel. +31 35 523 45 38
nederland@klsmartin.com

KLS Martin LP

Jacksonville · Florida, USA
Tel. +1 904 641 77 46
usa@klsmartin.com

KLS Martin do Brasil Ltda.

São Paulo · Brazil
Tel.: +55 11 3554 2299
brazil@klsmartin.com

Martin Italia S.r.l.

Milan · Italy
Tel. +39 039 605 67 31
italia@klsmartin.com

Gebrüder Martin GmbH & Co. KG

Moscow · Russia
Tel. +7 499 792-76-19
russia@klsmartin.com

Gebrüder Martin GmbH & Co. KG

Shanghai · China
Tel. +86 21 5820 6251
china@klsmartin.com

Nippon Martin K.K.

Tokyo · Japan
Tel. +81 3 3814 1431
nippon@klsmartin.com

Gebrüder Martin GmbH & Co. KG

Dubai · United Arab Emirates
Tel. +971 4 454 16 55
middleeast@klsmartin.com

KLS Martin France SARL

Mulhouse · France
Tel. +33 3 8951 3150
france@klsmartin.com

KLS Martin SE Asia Sdn. Bhd.

Penang · Malaysia
Tel.: +604 505 7838
malaysia@klsmartin.com

KLS Martin UK Ltd.

London · United Kingdom
Tel. +44 1189 000 570
uk@klsmartin.com

Gebrüder Martin GmbH & Co. KG**A company of the KLS Martin Group**

KLS Martin Platz 1 · 78532 Tuttlingen · Germany
P.O. Box 60 · 78501 Tuttlingen · Germany
Tel. +49 7461 706-0 · Fax +49 7461 706-193
info@klsmartin.com · www.klsmartin.com